



slidesbrain

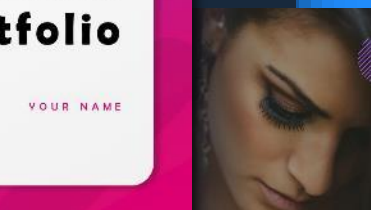
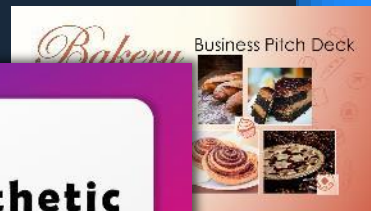
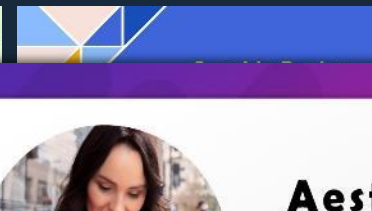
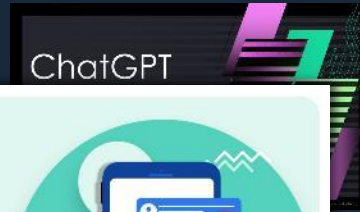
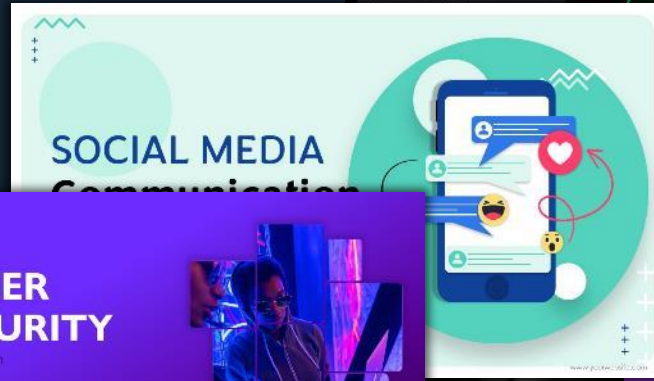
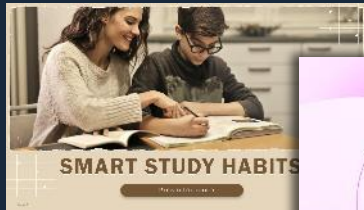
EASILY SLIDE EDITING

TUTORIAL

For editing any presentation deck

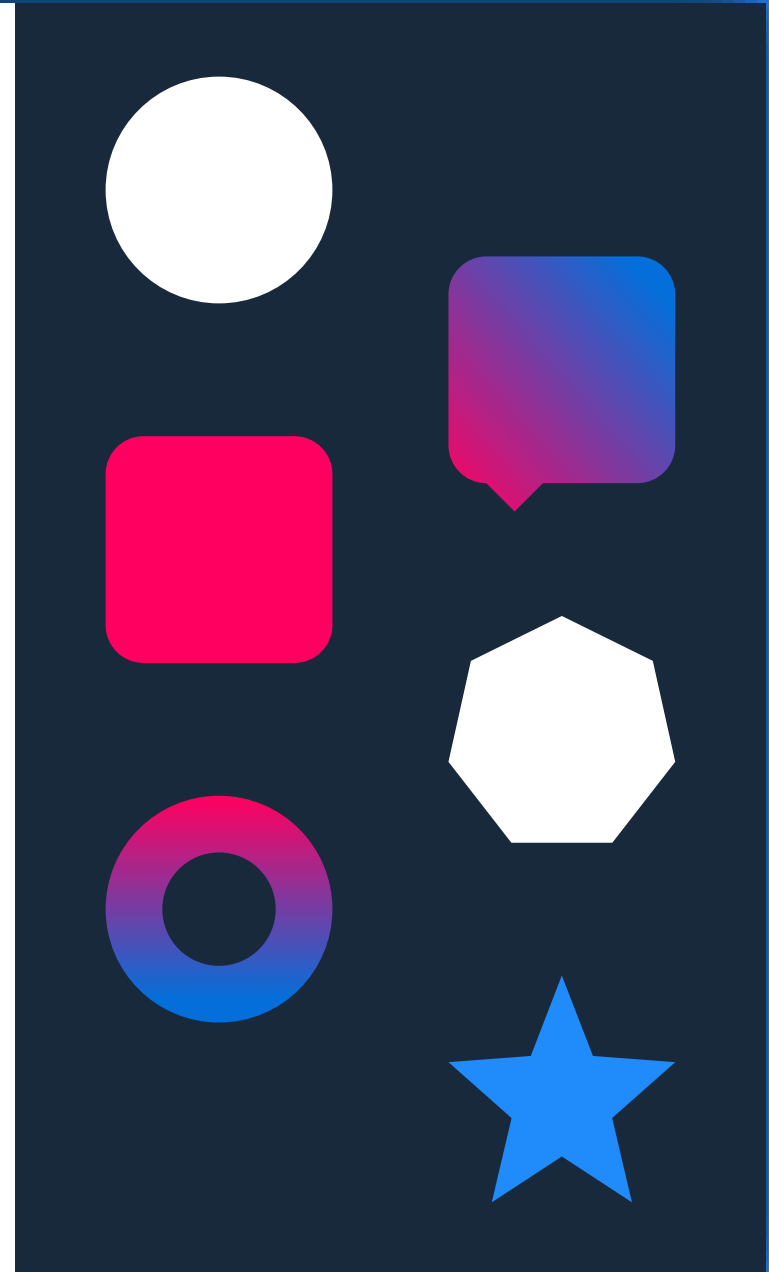
TUTORIAL

SlidesBrain 
Presents



Features for editing any presentation deck

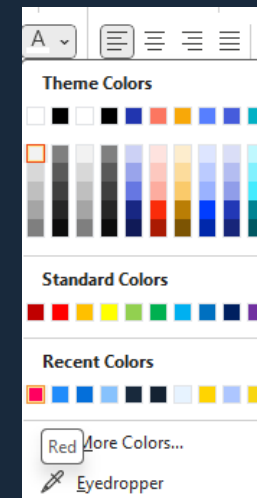
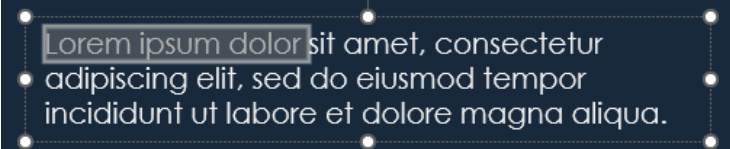
- 01** The PowerPoint presentation features customizable basic shapes and graphics.
- 02** All elements are fully and 100 percent editable within PowerPoint.
- 03** Modify colors, sizes, and orientations as needed.
- 04** Easily add, edit, or relocate text throughout the presentation.
- 05** Enjoy complete flexibility and creative control for a tailored user experience.



Instructions for editing text color

- 01 Highlight the text you want to modify.
- 02 Go to the Home tab.
- 03 Click on Font Color.
- 04 Choose the desired color to apply it to the selected text.

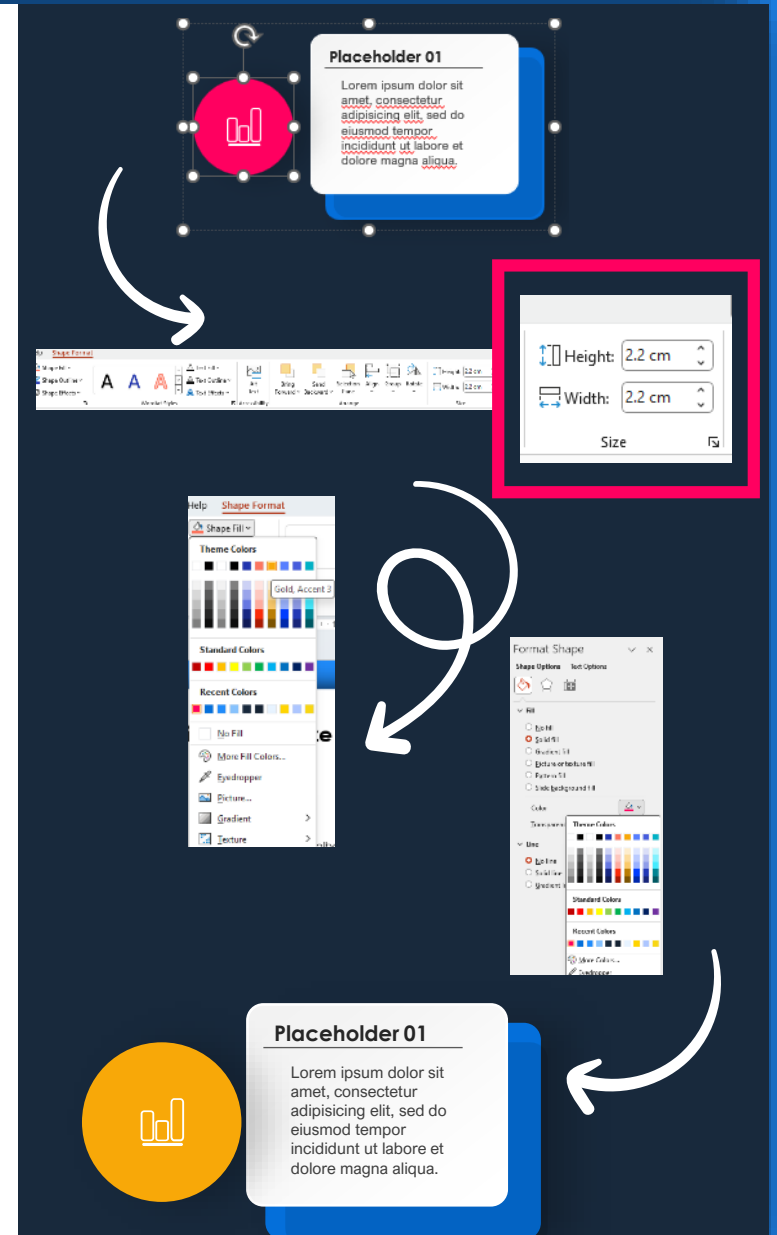
Lorem ipsum dolor sit amet, consectetur adipiscing elit, sed do eiusmod tempor incididunt ut labore et dolore magna aliqua.



Lorem ipsum dolor sit amet, consectetur adipiscing elit, sed do eiusmod tempor incididunt ut labore et dolore magna aliqua.

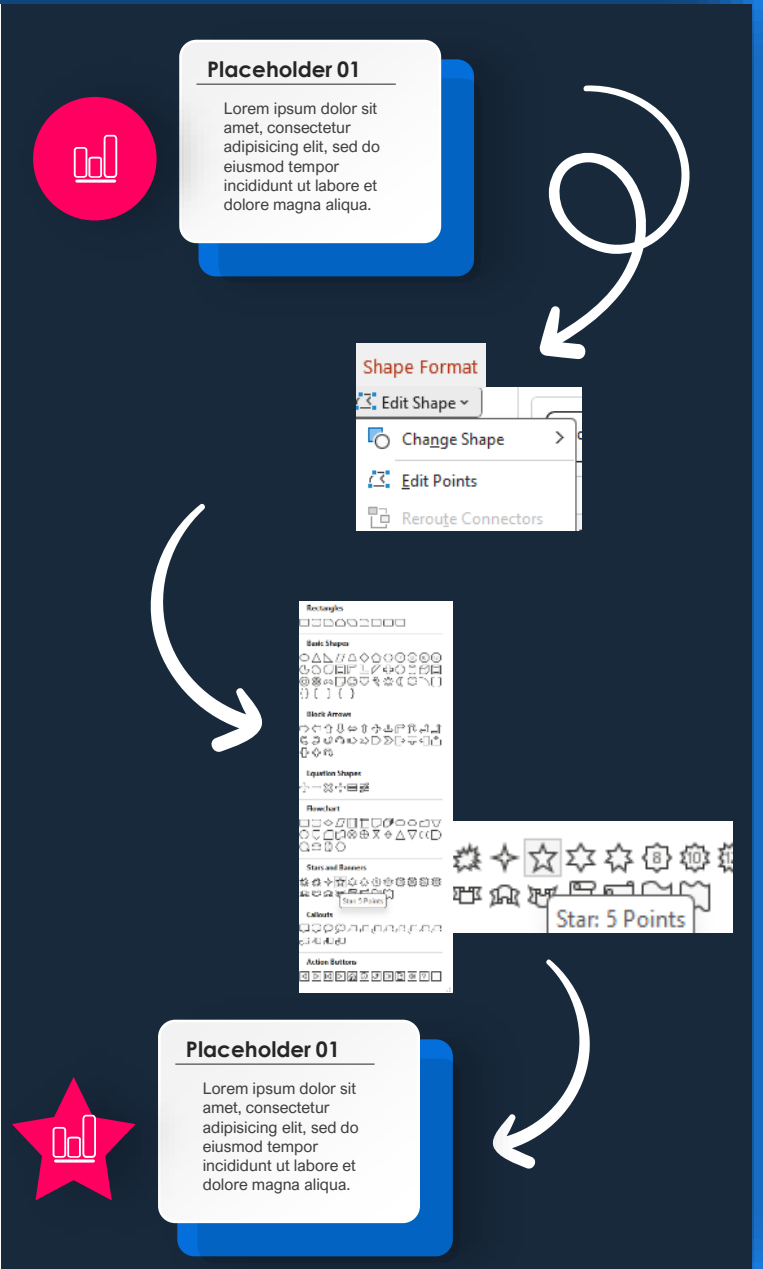
Instructions for editing shape size and color

- 01** Choose the shape you wish to edit.
- 02** Access the formatting tools, usually located in the toolbar or under a "Shape Format" tab.
- 03** Locate options for resizing the shape "Size", adjust height and width.
- 04** Adjust the shape's dimensions using handles or by entering specific measurements.
- 05** To alter the color, find the "Fill" or "Color" option or right click the shape , choose "Format Shape".
- 06** Select a color from the palette or utilize advanced settings for more customization.
- 07** Apply the changes and review the updated shape.



Instructions for changing shape to another shape

- 01** Choose the shape you wish to change.
- 02** Access the "Edit Shape", usually located in the toolbar or under a "Shape Format" tab.
- 03** Choose another shape, you wish to change, for eg- "Star: 5 Points" selected here.
- 04** Apply the changes and review the updated shape.



Instructions for editing any existing image

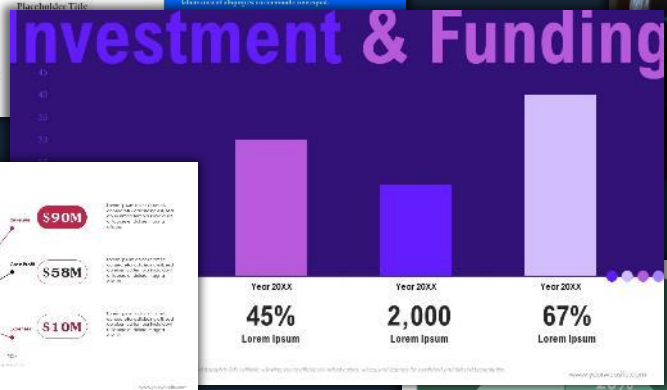
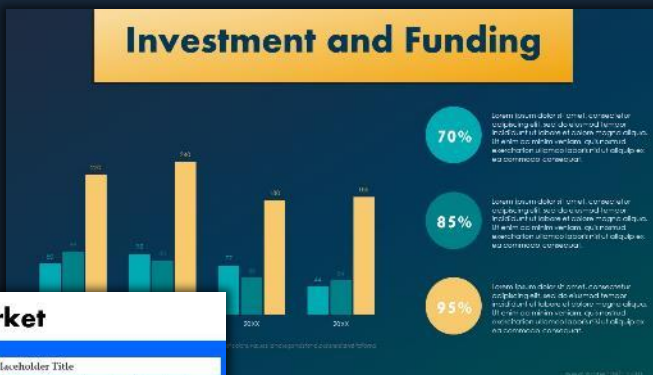
- 01** Choose the image you wish to change.
- 02** Delete the existing image, you see "Click icon to add picture".
- 03** Choose image of your own choice.
- 04** You will get the desired result.



For editing any chart and graph

TUTORIAL

SlidesBrain
Presents



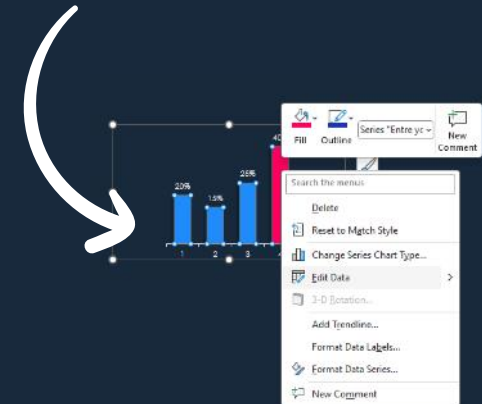
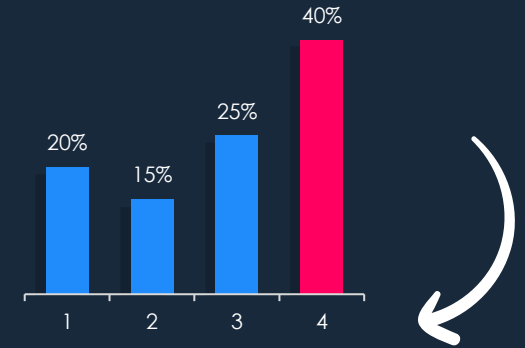
Instructions for editing any chart data

01 Choose the chart you wish to change, right the chart or graph.

02 click Edit Data, you will see excel file.

03 Change the numbers, you wish to edit.

04 Close the excel file, you will get the desired result.



| A | B | C | D | E | F |
|---|---|-----|---|---|---|
| 1 | | | | | |
| 2 | 1 | 20% | | | |
| 3 | 2 | 15% | | | |
| 4 | 3 | 25% | | | |
| 5 | 4 | 40% | | | |
| 6 | | | | | |
| 7 | | | | | |
| 8 | | | | | |
| 9 | | | | | |



We would love to hear from you! Whether you have questions, feedback, or simply want to connect, don't hesitate to reach out.

[Get in Touch](#)

Email: info@slidesbrain.com

Phone: +1 (437) 410-1061

Address: **Unit 305, 330 Highway 7 East, Richmond Hill,
ON L4B 3P8**

[Connect with us on social media](#)

